



**INTERNATIONAL
GEMOLOGICAL
INSTITUTE**

DIAMOND REPORT

ELECTRONIC COPY

September 6, 2023
 IGI Report Number 515293668
 Description NATURAL DIAMOND
 Shape and Cutting Style ROUND BRILLIANT
 Measurements 5.16 - 5.18 x 3.08 mm

GRADING RESULTS

Carat Weight 0.50 CARAT
 Color Grade E
 Clarity Grade VS 2
 Cut Grade EXCELLENT

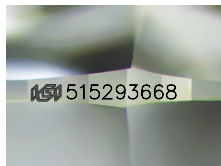
ADDITIONAL GRADING INFORMATION

Polish EXCELLENT
 Symmetry EXCELLENT
 Fluorescence VERY SLIGHT

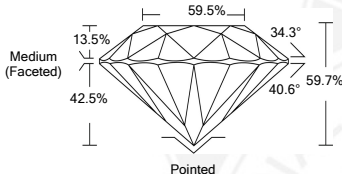
Identification Features CRYSTAL, FEATHER
 Inscription(s) IGI 515293668
 Comments: IDEAL CUT ROUND BRILLIANT



515293668



Sample Image Used



COLOR

D - F	G - J	K - M	N - R	S - Z	FANCY
Colorless	Near Colorless	Slightly Tinted	Very Light Color	Light Color	

CLARITY

IF	VVS ¹⁻²	VS ¹⁻²	SI ¹⁻²	I ¹⁻²
Internally Flawless	Very Very Slightly Included	Very Slightly Included	Slightly Included	Included

© IGI 2020, International Gemological Institute

FD - 10 20



September 6, 2023
 IGI Report Number 515293668
 NATURAL DIAMOND
 ROUND BRILLIANT
 5.16 - 5.18 x 3.08 mm
 Carat Weight 0.50 CARAT
 Color Grade E
 Clarity Grade VS 2
 Cut Grade EXCELLENT
 Polish EXCELLENT
 Symmetry EXCELLENT
 Fluorescence VERY SLIGHT
 Inscription(s) IGI 515293668
 Comments: IDEAL CUT ROUND BRILLIANT



September 6, 2023
 IGI Report Number 515293668
 NATURAL DIAMOND
 ROUND BRILLIANT
 5.16 - 5.18 x 3.08 mm
 Carat Weight 0.50 CARAT
 Color Grade E
 Clarity Grade VS 2
 Cut Grade EXCELLENT
 Polish EXCELLENT
 Symmetry EXCELLENT
 Fluorescence VERY SLIGHT
 Inscription(s) IGI 515293668
 Comments: IDEAL CUT ROUND BRILLIANT



THIS DOCUMENT WAS PRODUCED WITH THE FOLLOWING SECURITY MEASURES: SPECIAL DOCUMENT PAPER, INK SCREENS, WATERMARK, BACKGROUND DESIGNS, HOLOGRAM AND OTHER SECURITY FEATURES NOT LISTED AND DO EXCEED DOCUMENT SECURITY INDUSTRY GUIDELINES.