



**INTERNATIONAL  
GEMOLOGICAL  
INSTITUTE**

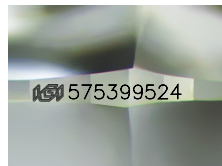
575399524



May 28, 2023  
IGI Report Number 575399524  
NATURAL DIAMOND  
ROUND BRILLIANT  
4.34 - 4.37 x 2.70 mm  
Carat Weight 0.32 CARAT  
Color Grade G  
Clarity Grade VS 2  
Cut Grade EXCELLENT  
Polish EXCELLENT  
Symmetry EXCELLENT  
Fluorescence NONE  
Inscription(s) IGI 575399524  
Comments: IDEAL CUT ROUND  
BRILLIANT

**DIAMOND REPORT**

**ELECTRONIC COPY**



Sample Image Used

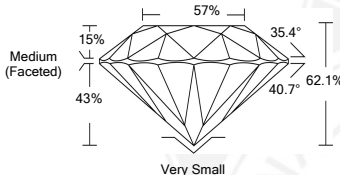
May 28, 2023  
IGI Report Number 575399524  
Description NATURAL DIAMOND  
Shape and Cutting Style ROUND BRILLIANT  
Measurements 4.34 - 4.37 x 2.70 mm

**GRADING RESULTS**

Carat Weight 0.32 CARAT  
Color Grade G  
Clarity Grade VS 2  
Cut Grade EXCELLENT

**ADDITIONAL GRADING INFORMATION**

Polish EXCELLENT  
Symmetry EXCELLENT  
Fluorescence NONE  
Inscription(s) IGI 575399524  
Comments: IDEAL CUT ROUND BRILLIANT



**COLOR**

D - F	G - J	K - M	N - R	S - Z	FANCY
Colorless	Near Colorless	Slightly Tinted	Very Light Color	Light Color	

**CLARITY**

IF	VVS <sup>1-2</sup>	VS <sup>1-2</sup>	SI <sup>1-2</sup>	I <sup>1-2</sup>
Internally Flawless	Very Very Slightly Included	Very Slightly Included	Slightly Included	Included



May 28, 2023  
IGI Report Number 575399524  
NATURAL DIAMOND  
ROUND BRILLIANT  
4.34 - 4.37 x 2.70 mm  
Carat Weight 0.32 CARAT  
Color Grade G  
Clarity Grade VS 2  
Cut Grade EXCELLENT  
Polish EXCELLENT  
Symmetry EXCELLENT  
Fluorescence NONE  
Inscription(s) IGI 575399524  
Comments: IDEAL CUT ROUND  
BRILLIANT

