



**INTERNATIONAL
GEMOLOGICAL
INSTITUTE**

635458717



June 3, 2024

IGI Report Number 635458717

NATURAL DIAMOND

ROUND BRILLIANT

4.74 - 4.78 x 2.86 mm

Carat Weight 0.40 CARAT

Color Grade E

Clarity Grade VS 2

Cut Grade EXCELLENT

Polish EXCELLENT

Symmetry EXCELLENT

Fluorescence VERY SLIGHT

Inscription(s) IGI 635458717

Comments: IDEAL CUT ROUND
BRILLIANT



June 3, 2024

IGI Report Number 635458717

NATURAL DIAMOND

ROUND BRILLIANT

4.74 - 4.78 x 2.86 mm

Carat Weight 0.40 CARAT

Color Grade E

Clarity Grade VS 2

Cut Grade EXCELLENT

Polish EXCELLENT

Symmetry EXCELLENT

Fluorescence VERY SLIGHT

Inscription(s) IGI 635458717

Comments: IDEAL CUT ROUND
BRILLIANT

DIAMOND REPORT

ELECTRONIC COPY

June 3, 2024

IGI Report Number 635458717

Description NATURAL DIAMOND

Shape and Cutting Style ROUND BRILLIANT

Measurements 4.74 - 4.78 x 2.86 mm

GRADING RESULTS

Carat Weight 0.40 CARAT

Color Grade E

Clarity Grade VS 2

Cut Grade EXCELLENT

ADDITIONAL GRADING INFORMATION

Polish EXCELLENT

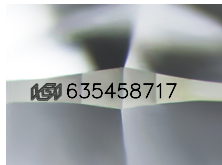
Symmetry EXCELLENT

Fluorescence VERY SLIGHT

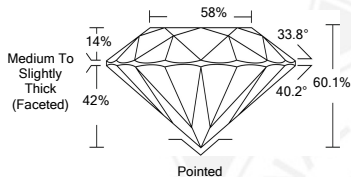
Identification Features FEATHER, CLOUD, CRYSTAL

Inscription(s) IGI 635458717

Comments: IDEAL CUT ROUND BRILLIANT



Sample Image Used



COLOR

D - F	G - J	K - M	N - R	S - Z	FANCY
Colorless	Near Colorless	Slightly Tinted	Very Light Color	Light Color	

CLARITY

IF	VVS ¹⁻²	VS ¹⁻²	SI ¹⁻²	I ¹⁻²
Internally Flawless	Very Very Slightly Included	Very Slightly Included	Slightly Included	Included

© IGI 2020, International Gemological Institute

FD - 10 20



THIS DOCUMENT WAS PRODUCED WITH THE FOLLOWING SECURITY MEASURES: SPECIAL DOCUMENT PAPER, INK SCREENS, WATERMARK BACKGROUND DESIGNS, HOLOGRAM AND OTHER SECURITY FEATURES NOT LISTED AND DO EXCEED DOCUMENT SECURITY INDUSTRY GUIDELINES.