



**INTERNATIONAL  
GEMOLOGICAL  
INSTITUTE**

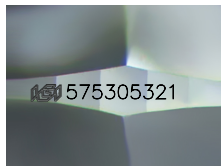
575305321



October 19, 2023  
IGI Report Number 575305321  
NATURAL DIAMOND  
ROUND BRILLIANT  
4.42 - 4.44 x 2.73 mm  
Carat Weight 0.33 CARAT  
Color Grade E  
Clarity Grade VS 2  
Cut Grade EXCELLENT  
Polish EXCELLENT  
Symmetry EXCELLENT  
Fluorescence VERY SLIGHT  
Inscription(s) IGI 575305321  
Comments: IDEAL CUT ROUND  
BRILLIANT

**DIAMOND REPORT**

**ELECTRONIC COPY**



Sample Image Used

October 19, 2023  
IGI Report Number 575305321  
Description NATURAL DIAMOND  
Shape and Cutting Style ROUND BRILLIANT  
Measurements 4.42 - 4.44 x 2.73 mm

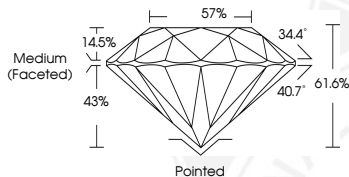
**GRADING RESULTS**

Carat Weight 0.33 CARAT  
Color Grade E  
Clarity Grade VS 2  
Cut Grade EXCELLENT

**ADDITIONAL GRADING INFORMATION**

Polish EXCELLENT  
Symmetry EXCELLENT  
Fluorescence VERY SLIGHT

Identification Features FEATHER, CRYSTAL  
Inscription(s) IGI 575305321  
Comments: IDEAL CUT ROUND BRILLIANT



**COLOR**

D - F	G - J	K - M	N - R	S - Z	FANCY
Colorless	Near Colorless	Slightly Tinted	Very Light Color	Light Color	

**CLARITY**

IF	VVS <sup>1-2</sup>	VS <sup>1-2</sup>	SI <sup>1-2</sup>	I <sup>1-2</sup>
Internally Flawless	Very Very Slightly Included	Very Slightly Included	Slightly Included	Included



October 19, 2023  
IGI Report Number 575305321  
NATURAL DIAMOND  
ROUND BRILLIANT  
4.42 - 4.44 x 2.73 mm  
Carat Weight 0.33 CARAT  
Color Grade E  
Clarity Grade VS 2  
Cut Grade EXCELLENT  
Polish EXCELLENT  
Symmetry EXCELLENT  
Fluorescence VERY SLIGHT  
Inscription(s) IGI 575305321  
Comments: IDEAL CUT ROUND  
BRILLIANT



© IGI 2020, International Gemological Institute

FD - 10 20

THIS DOCUMENT WAS PRODUCED WITH THE FOLLOWING SECURITY MEASURES: SPECIAL DOCUMENT PAPER, INK SCREENS, WATERMARK BACKGROUND DESIGNS, HOLOGRAM AND OTHER SECURITY FEATURES NOT LISTED AND DO EXCEED DOCUMENT SECURITY INDUSTRY GUIDELINES.