



**INTERNATIONAL  
GEMOLOGICAL  
INSTITUTE**

**DIAMOND REPORT**

**ELECTRONIC COPY**

May 10, 2024  
 IGI Report Number 629439595  
 Description NATURAL DIAMOND  
 Shape and Cutting Style ROUND BRILLIANT  
 Measurements 4.24 - 4.28 x 2.70 mm

**GRADING RESULTS**

Carat Weight 0.30 CARAT  
 Color Grade E  
 Clarity Grade SI 1  
 Cut Grade EXCELLENT

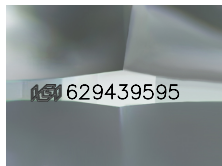
**ADDITIONAL GRADING INFORMATION**

Polish EXCELLENT  
 Symmetry EXCELLENT  
 Fluorescence NONE

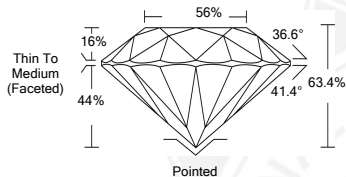
Identification Features FEATHER, CRYSTAL, CLOUD, CAVITY  
 Inscription(s) IGI 629439595



629439595



Sample Image Used



**COLOR**

D - F	G - J	K - M	N - R	S - Z	FANCY
Colorless	Near Colorless	Slightly Tinted	Very Light Color	Light Color	

**CLARITY**

IF	VVS <sup>1-2</sup>	VS <sup>1-2</sup>	SI <sup>1-2</sup>	I <sup>1-2</sup>
Internally Flawless	Very Very Slightly Included	Very Slightly Included	Slightly Included	Included

© IGI 2020, International Gemological Institute

FD - 10 20

THIS DOCUMENT WAS PRODUCED WITH THE FOLLOWING SECURITY MEASURES: SPECIAL DOCUMENT PAPER, INK SCREENS, WATERMARK BACKGROUND DESIGNS, HOLOGRAM AND OTHER SECURITY FEATURES NOT LISTED AND DO EXCEED DOCUMENT SECURITY INDUSTRY GUIDELINES.



May 10, 2024  
 IGI Report Number 629439595  
 NATURAL DIAMOND  
 ROUND BRILLIANT  
 4.24 - 4.28 x 2.70 mm  
 Carat Weight 0.30 CARAT  
 Color Grade E  
 Clarity Grade SI 1  
 Cut Grade EXCELLENT  
 Polish EXCELLENT  
 Symmetry EXCELLENT  
 Fluorescence NONE  
 Inscription(s) IGI 629439595



May 10, 2024  
 IGI Report Number 629439595  
 NATURAL DIAMOND  
 ROUND BRILLIANT  
 4.24 - 4.28 x 2.70 mm  
 Carat Weight 0.30 CARAT  
 Color Grade E  
 Clarity Grade SI 1  
 Cut Grade EXCELLENT  
 Polish EXCELLENT  
 Symmetry EXCELLENT  
 Fluorescence NONE  
 Inscription(s) IGI 629439595