



**INTERNATIONAL
GEMOLOGICAL
INSTITUTE**

619459539



February 23, 2024
IGI Report Number 619459539
NATURAL DIAMOND
ROUND BRILLIANT

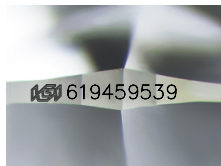
4.64 - 4.69 x 2.95 mm
Carat Weight 0.40 CARAT
Color Grade D
Clarity Grade SI 1
Cut Grade EXCELLENT
Polish EXCELLENT
Symmetry EXCELLENT
Fluorescence VERY SLIGHT
Inscription(s) IGI 619459539

DIAMOND REPORT

ELECTRONIC COPY

February 23, 2024

IGI Report Number 619459539
Description NATURAL DIAMOND
Shape and Cutting Style ROUND BRILLIANT
Measurements 4.64 - 4.69 x 2.95 mm



Sample Image Used

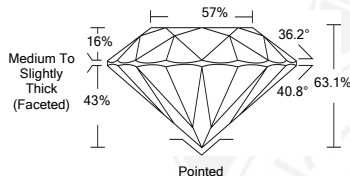
GRADING RESULTS

Carat Weight 0.40 CARAT
Color Grade D
Clarity Grade SI 1
Cut Grade EXCELLENT

ADDITIONAL GRADING INFORMATION

Polish EXCELLENT
Symmetry EXCELLENT
Fluorescence VERY SLIGHT

Identification Features FEATHER, CRYSTAL
Inscription(s) IGI 619459539



COLOR

D - F	G - J	K - M	N - R	S - Z	FANCY
Colorless	Near Colorless	Slightly Tinted	Very Light Color	Light Color	

CLARITY

IF	VVS ¹⁻²	VS ¹⁻²	SI ¹⁻²	I ¹⁻²
Internally Flawless	Very Very Slightly Included	Very Slightly Included	Slightly Included	Included



February 23, 2024
IGI Report Number 619459539
NATURAL DIAMOND
ROUND BRILLIANT

4.64 - 4.69 x 2.95 mm
Carat Weight 0.40 CARAT
Color Grade D
Clarity Grade SI 1
Cut Grade EXCELLENT
Polish EXCELLENT
Symmetry EXCELLENT
Fluorescence VERY SLIGHT
Inscription(s) IGI 619459539



© IGI 2020, International Gemological Institute

FD - 10 20

THIS DOCUMENT WAS PRODUCED WITH THE FOLLOWING SECURITY MEASURES: SPECIAL DOCUMENT PAPER, INK SCREENS, WATERMARK BACKGROUND DESIGNS, HOLOGRAM AND OTHER SECURITY FEATURES NOT LISTED AND DO EXCEED DOCUMENT SECURITY INDUSTRY GUIDELINES.